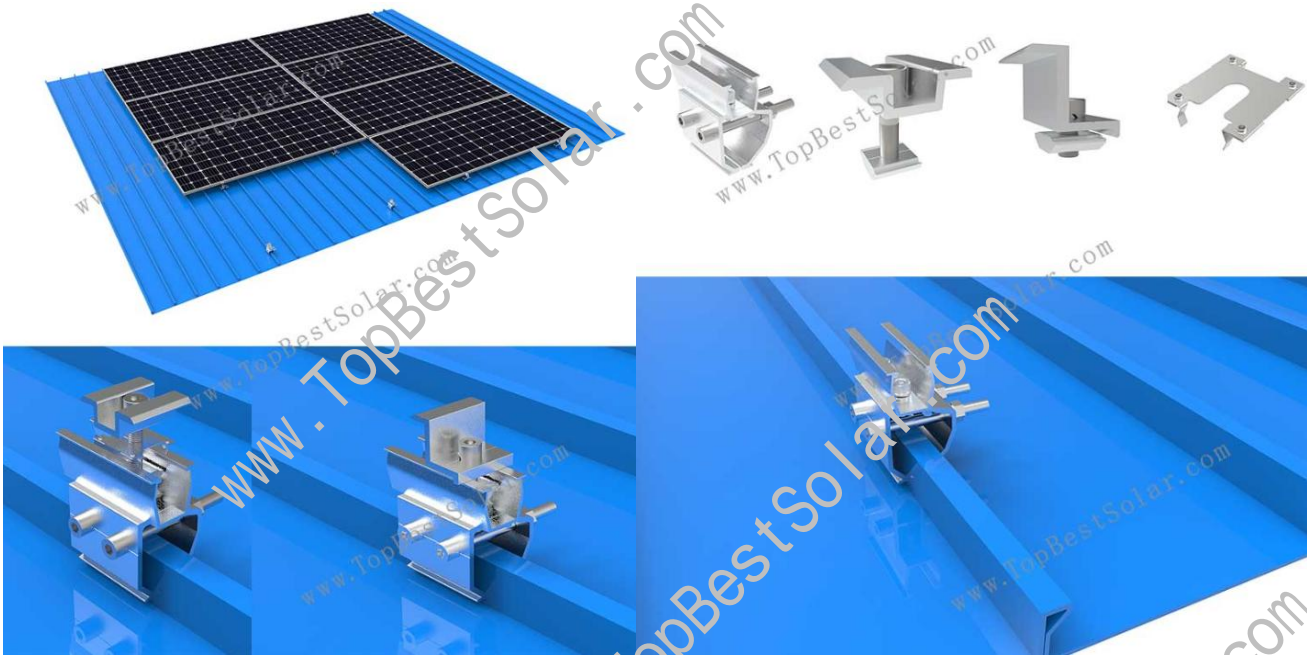


## Universal Standing Seam Roof Mounts Installation

### Product introduction

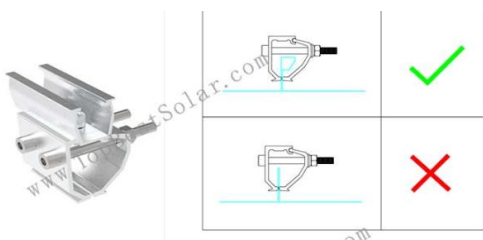
solar Universal standing seam roof mounts is an innovative non-penetrative clamp mounting. And it is suitable for virtually all standing seam profiles and metals, including aluminium, copper and zinc.



### Before the installation

There is a large number of different standing seam products with different shapes that are installed across the world. The TBS Universal clamp is not compatible with all of them. The exact product name and type of the standing seam sheets on the roof of a customer's house will remain unknown in most cases, There are also other implications that make it compulsory to have a site assessment done prior to the installation.

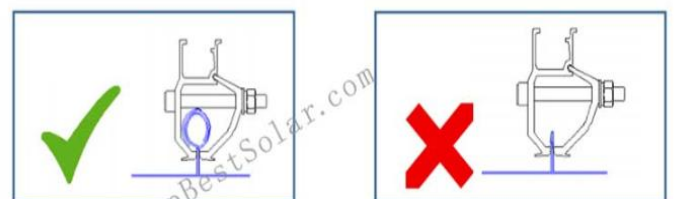
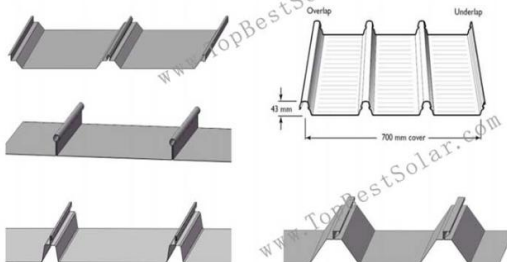
Applicable to the following standing seam roofing shapes:



Please note:

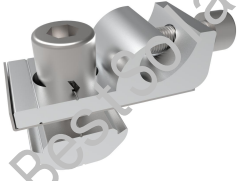
**Only shapes with a wider 'head,section will meet the requirements for installation**

Applicable to the following standing seam roofing







## Components:

No.	1	2	3
Name	Universal clamp kits	Mid clamp	End clamp
Picture			
Material	AL6005-T5&SUS304	AL6005-T5&SUS304	AL6005-T5&SUS304

No.	4	5
Name	Grounding washer	Grounding lug
Picture		
Material	SUS304	AL6005-T5&SUS304

## Tools:

Name	M8 wrench	M8 Socket wrench	Electric wrench	Band tape
Picture				

## Standard installation

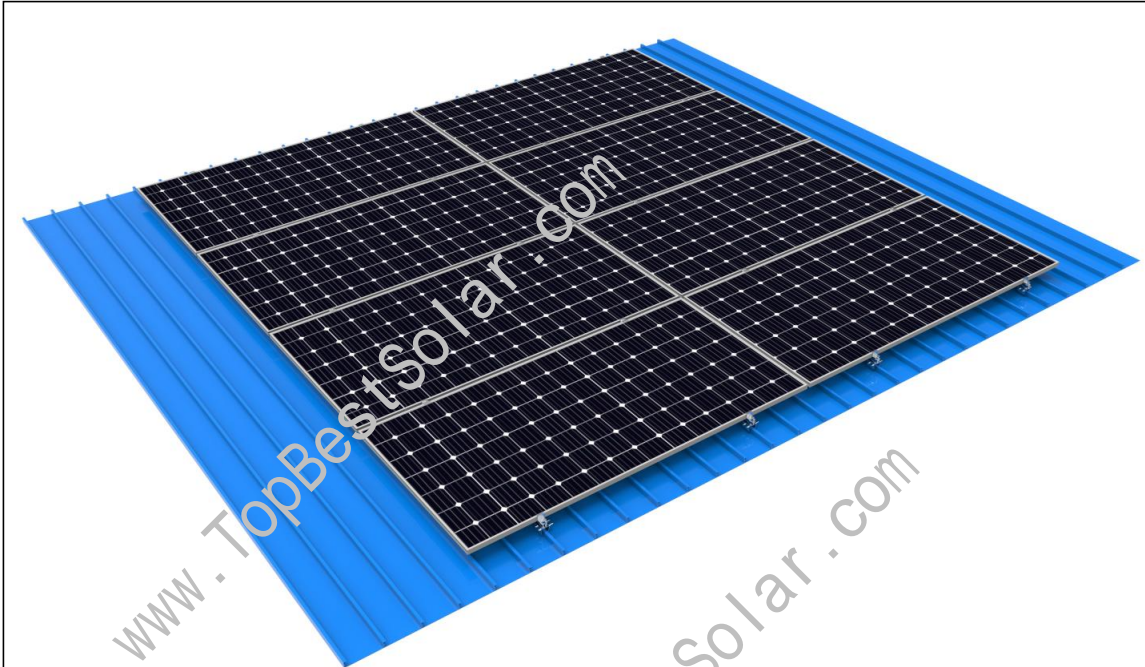
The standard installation on standing seam roofs does not require longer-Rails. The frame of the panel is placed directly onto the clamp with mini rail and fixed with either an end clamp or a inter clamp.

The panels rest on the clamp with mini rail on their long edge and will therefore be installed in landscape orientation. The clamping distance and maximum panel overhang must be taken into consideration by choosing a proper mounting distance of the clamps on the seams. The panel overhang should not exceed 4 of the panel length.

Example:

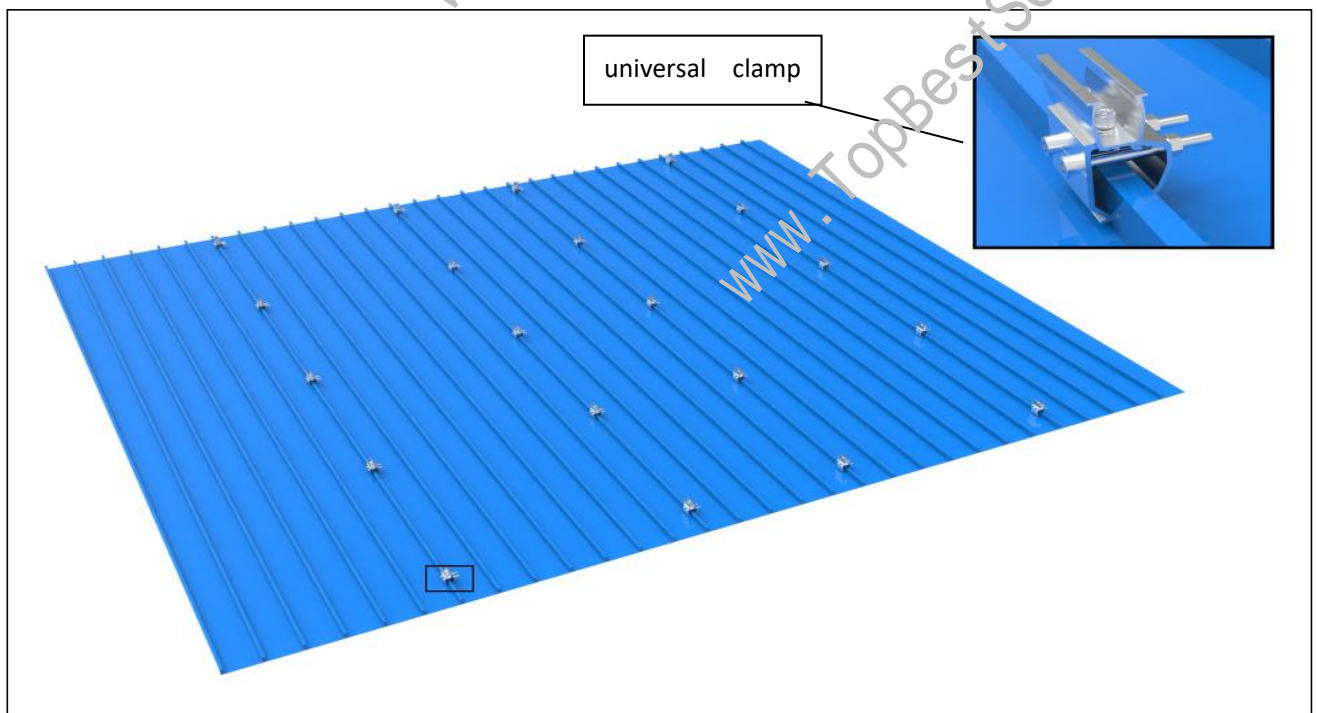
Panel length =1722 mm > maximum overhang = 430 mm

## Installation effect picture

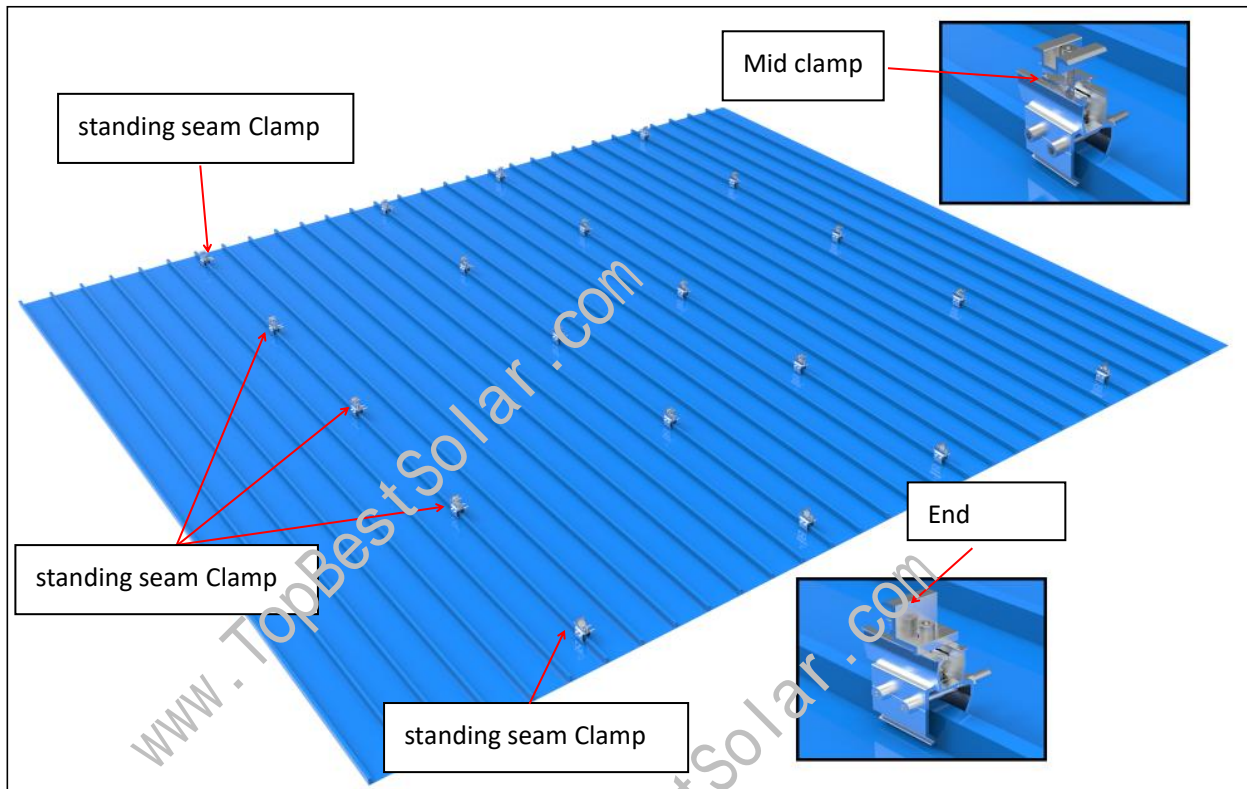


## Installation steps:

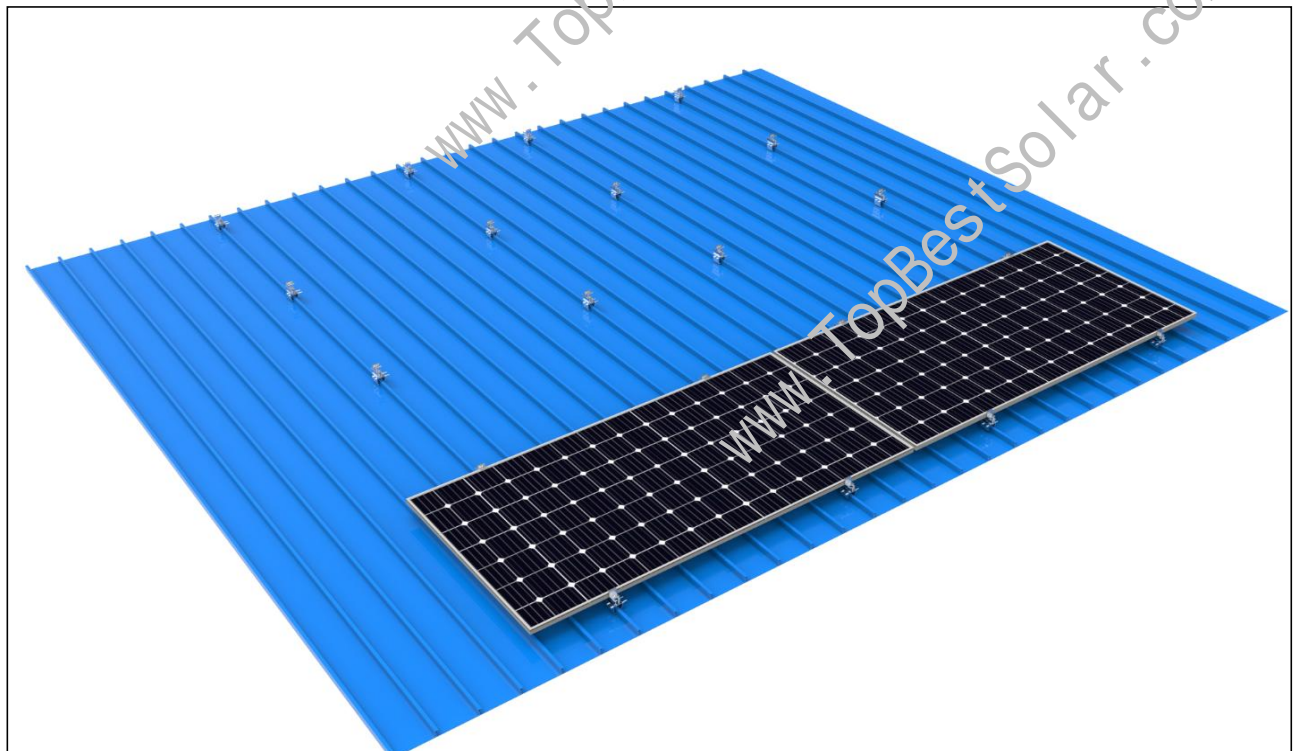
1. Fix the universal clamp kits according to the drawing requirements and tighten the bolts to fix it.



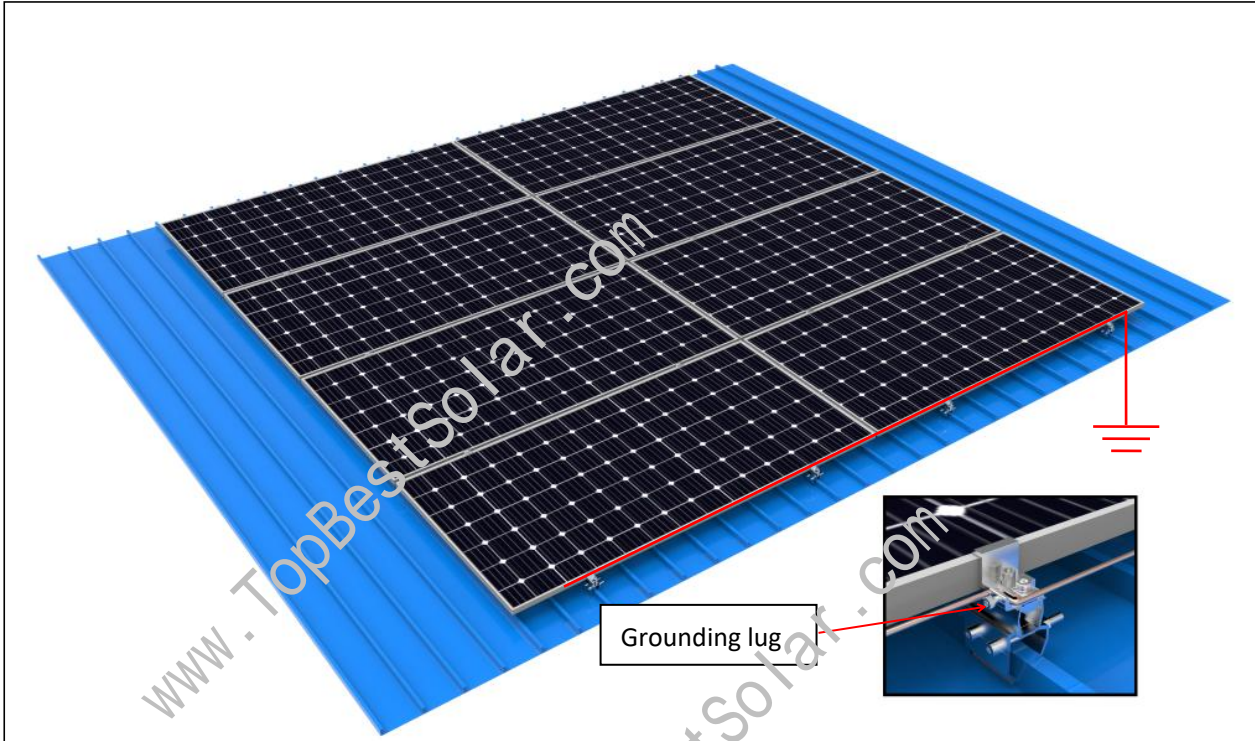
2. Put the end clamp into the clamp kits on the side. And mid clamp with grounding washer on the middle part.



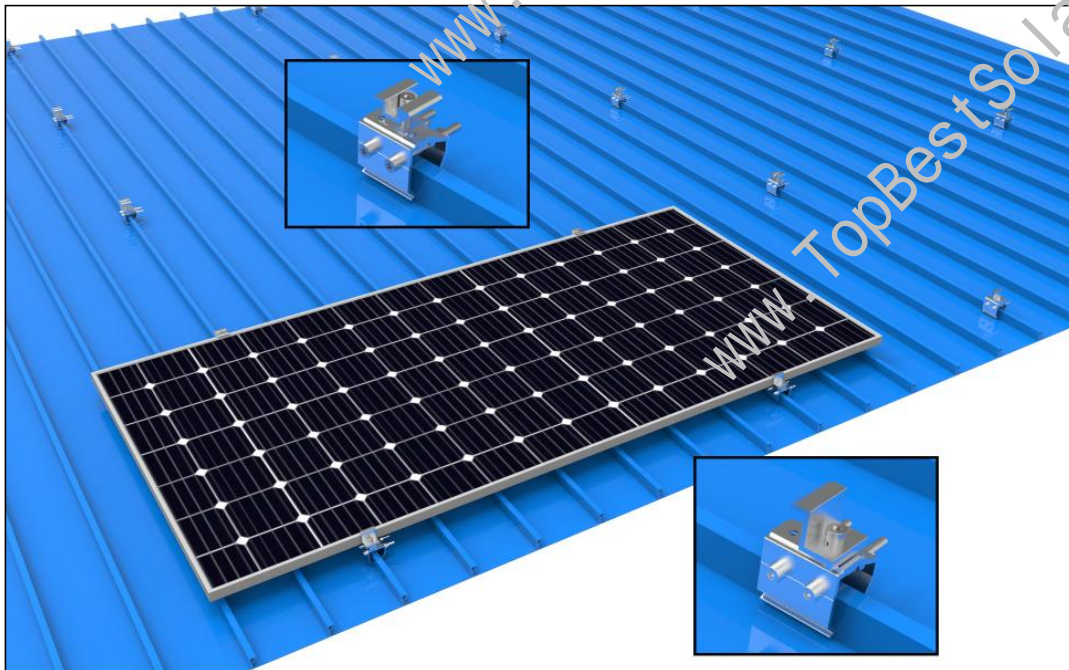
3. Lock the solar panel by end clamp the mid clamp.



4.Installation completed, use grounding lug to fix the grounding wire into the ground.



**Other ways to use the clamp: 1- Directly lock the end clamp and mid clamp without rail**



Other ways to use the clamp: 2-Add rail with clamp

